

Year 11 Parent Bulletin

Tuesday 10th March 2026



Dear all,

This week marks the beginning of PPE 2 week. Students have already received their individualised timetables and the timetable is shared below for you as well. Please can we ask for your support in ensuring that students have the correct equipment each day and a clear water bottle.

To help students start the day well, a reminder that breakfast is available in the canteen. Students can have toast or porridge at no additional cost and we encourage students to take advantage of this.

We recognise that this will be a busy and sometimes stressful week for students. To acknowledge their hard work and commitment we will be running a reward session block 4 on the 13th March. Students can select an activity from silent disco, art or sport. We are looking forward to celebrating with the students.

Looking ahead to next week, we are pleased to be welcoming Noah Law, the local MP, who will be speaking to students in assembly. It will be a great opportunity for students to hear from him and we are looking forward to hearing what he has to share.

Thank you for your continued support.



Miss Dingwall
Head of Year 11

Year 11 Prep Sessions

		Week A	Week B
Tuesday		Maths	Maths
Wednesday		Physics, Biology & Chemistry	History, Geography & MFL
Thursday		English	English
Friday		Open Subjects	Open Subjects

Beat Exam Stress!

Top Tip:

Get enough sleep. A tired brain can't think clearly, we advise 8-9 hours of sleep.

Eat and drink well. Water, fruit and proper meals help your energy levels. Too much caffeine and sugar can make anxieties worse.

See page 14 of your Study Buddy for further guidance on how the brain works and top revision tips.



PPE 2 Timetable

Week 1 (A)	Monday 9 th March	Tuesday 10 th March	Wednesday 11 th March	Thursday 12 th March	Friday 13 th March
Start 9am (PEP 8.45am)	Maths Paper 1 (non-calc)	Maths Paper 2	Geography Paper 2	Physics	Maths Paper 3
Start 11.30am (PEP 11.15am)	Biology	English Lit Paper 2	Chemistry		Health & SC Component 3 Computer Science Paper 1
Start 12.45 (PEP 12:30pm)				English Lang Paper 1	


Week 2 (B)	Tuesday 17 th March
Start 9am (PEP 8.45am)	Spanish Listening

Easter Revision Sessions

Information around timings will be shared in the next bulletin. Students do not have to wear school uniform, but should bring school equipment.


13th April	14th April	15th April	16th April	17th April
History		English	Maths	Art & MFL

We encourage you to revise for the PPEs with the students using their Knowledge Organisers!



Year 11 Knowledge Organiser
Learning Cycle 2 – February 2026

Student Name _____
Tutor Group _____



Year 11 Study Buddy
Daily Timetables & Personal Learning Checklists

Student Name _____
Tutor Group _____

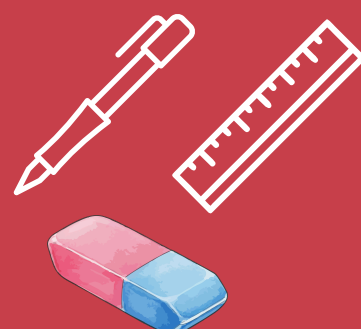
PPE2 information

Blazers: Students will not be permitted to wear their blazers into the PPEs, they will leave them with their bags in a secure space, prior to entering the exam rooms. If students are concerned about warmth, they are welcome to wear a grey jumper.



Equipment: we would be grateful if all students were equipped with the following, ahead of the PPEs:

- Clear pencil case
- Black pen
- Pencil
- Rubber
- Ruler
- Scientific calculator



Whilst we keep spare equipment in the exam hall for those who need it, this can cause disruption to the students' exam experience.

Equipment can be purchased on the [Poltair School Shop](#).



Water bottles: Students are only permitted to take transparent water bottles into the exam rooms, and they cannot have fizzy or hot drinks.

JCQ regulations: To see the full list of regulations which we have to adhere to, please see the Joint Council for Qualifications guidance document.



Breaks & Lunches: Some PPEs will run into break time. Students will therefore be given extended breaks and will have full access to the canteen during this time.





Year 11 GCSE Art students are invited to come into school to continue developing their ideas in preparation for the GCSE Art Exam.



Key info:

- Sign in at reception
- non-uniform
- Please bring packed lunch

Art GCSE Exam: starts 27th April

Education Record App

You may be aware from the news, that this year students will be able to access their GCSE Results online, via the Education records app. You can find full information about the service [here, on the Department for Education website](#), or [here- in a short YouTube video](#) designed for students.

Students are still encouraged to attend our results day in person, and receive the paper copy of their examination certificates - we are proud to be part of this day with them, the app is an addition that acts as another record of these results and will offer a quicker way to pass their results onto their College/6th Form providers.

We will be supporting our Y11 students to get setup on this app on Monday 23rd March. It will be optional for our students, and if they do wish to get this setup we will require them to have a smart phone. The students need to have their identity verified by the school in order to connect to their education record.

On the 23rd there will be the option of temporary, restricted access to WIFI in order for students to download the app and sign in. However- to speed up the process, we would be grateful if students could have the app already downloaded on their phones on that day to allow us to prioritise getting them logged in.

If you are able to do so, we would be grateful for your support in getting this downloaded onto their phones. There are QR codes below to link to the app stores.

Android



Apple





Geography pre-release

Geography Students will receive pre-released examination materials in their lessons between 19th March-2nd April. The materials are the same materials which they will receive in their Geography Paper 3 in the summer and the purpose of pre-releasing them is to allow for an in-depth study of a specific theme prior to the exam.

This section of the examination paper accounts for 37 marks towards the student's final grade. Whilst there is no specific preparation which the students need to complete ahead of the pre-release, good attendance during this period will directly impact students' knowledge and understanding of the exam content.

A Message from Ms Hawkins (Head of Geography):



The AQA GCSE Geography Decision-Making Exercise (DME) 2026 is more than just an exam — it's a chance for students to become problem-solvers. This assessment challenges learners to analyse complex issues, weigh up competing viewpoints, and make informed, evidence-based decisions about the world around them.

The DME gives students the opportunity to: engage with authentic geographical scenarios, apply knowledge to real-life decision-making, develop confidence in evaluating evidence and strengthen essential skills such as reasoning, communication, and justification

These are the very skills that colleges, employers, and universities value — making the DME a powerful stepping stone for future success. They'll interpret maps, graphs, photographs, and written sources, then use this information to reach a well-supported conclusion. It's an assessment that rewards curiosity, independence, and thoughtful judgement. We look forward to seeing what topic is chosen for this year's DME.